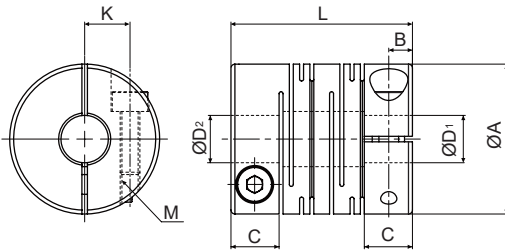




## ■ Dimensions

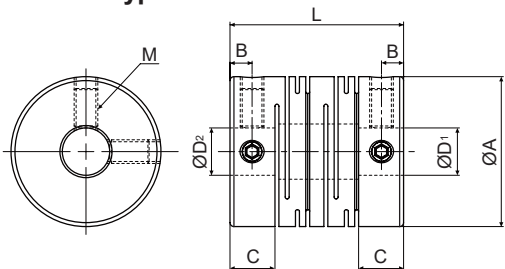
(unit: mm)

### ◎ Clamp type



Model	ØA	L	ØD <sub>1</sub>	ØD <sub>2</sub>	M	C	B	K
ERB-A-19C-04/04	19	23	4 <sup>+0.018</sup> <sub>0</sub>	4 <sup>+0.018</sup> <sub>0</sub>	M2.5	6.1	3	5.75
ERB-A-19C-04/05				5 <sup>+0.018</sup> <sub>0</sub>				
ERB-A-19C-04/06				6 <sup>+0.018</sup> <sub>0</sub>				
ERB-A-19C-05/05			5 <sup>+0.018</sup> <sub>0</sub>					
ERB-A-19C-05/06			6 <sup>+0.018</sup> <sub>0</sub>					
ERB-A-19C-06/06			6 <sup>+0.018</sup> <sub>0</sub>					
ERB-A-26C-06/06	26	31.4	6 <sup>+0.018</sup> <sub>0</sub>	6 <sup>+0.018</sup> <sub>0</sub>	M3	7.4	3.7	8.55
ERB-A-26C-06/08				8 <sup>+0.018</sup> <sub>0</sub>				
ERB-A-26C-08/08				8 <sup>+0.018</sup> <sub>0</sub>				

### ◎ Set screw type



Model	ØA	L	ØD <sub>1</sub>	ØD <sub>2</sub>	M	C	B
ERB-A-19S-04/04	19	22	4 <sup>+0.018</sup> <sub>0</sub>	4 <sup>+0.018</sup> <sub>0</sub>	M3	5.7	2.8
ERB-A-19S-04/05				5 <sup>+0.018</sup> <sub>0</sub>			
ERB-A-19S-04/06				6 <sup>+0.018</sup> <sub>0</sub>			
ERB-A-19S-05/05			5 <sup>+0.018</sup> <sub>0</sub>				
ERB-A-19S-05/06			6 <sup>+0.018</sup> <sub>0</sub>				
ERB-A-19S-06/06			6 <sup>+0.018</sup> <sub>0</sub>				
ERB-A-26S-06/06	26	30	6 <sup>+0.018</sup> <sub>0</sub>	6 <sup>+0.018</sup> <sub>0</sub>	M4	6.8	3.4
ERB-A-26S-06/08				8 <sup>+0.018</sup> <sub>0</sub>			
ERB-A-26S-08/08				8 <sup>+0.018</sup> <sub>0</sub>			

## ■ Proper Usage

The flexible coupling is available in the places where vibration or misalignment occurs. It must be used within the rated allowable misalignment range.

When using the flexible coupling over the rated misalignment range, it may cause vibration or shorten the life cycle.

When there are more than two misalignments, each allowable value is 50%.

It is recommended to use the flexible coupling below 1/3 of the allowable misalignment value to extend the life of the coupling and the applied equipment.

- This product is for transferring rotation power. If there is a risk of human contact, attach the caution label or install a safety cover in a prominent position.
- Rated torque is available to transfer the power continuously. Check the rated capacity before using this product.
- Max. torque is available to transfer the power in a moment. Check the rated capacity before using this product.

### ◎ Caution for using

- Couplings are for transferring rotation angle and power between shafts. Before using this, make sure to check the purpose and appropriacy.
- This product uses high strength aluminum alloy and has spring power as Radial beam type. However, if the coupling is dropped, hit or applied excessive power, it may be damaged or transformed.
- If the coupling is applied over the rated misalignment, or the tolerance of the shaft is over the allowable value, it may cause plastic deformation, damage of the product or shorten the life cycle.
- When it occurs abnormal sound during operating the equipment with this coupling, stop the operation and remove the cause such as misalignment, unscrewing, or rotation hazard.
- If this coupling is applied to the equipment which has big fluctuation of load, shaft may be loose by unscrewing. Tighten the screw securely and prevent from unscrewing.

SENSORS

CONTROLLERS

MOTION DEVICES

SOFTWARE

(A) Photoelectric Sensors

(B) Fiber Optic Sensors

(C) LiDAR

(D) Door/Area Sensors

(E) Vision Sensors

(F) Proximity Sensors

(G) Pressure Sensors

(H) Rotary Encoders

(I) Connectors/ Connector Cables/ Sensor Distribution Boxes/ Sockets